

# NORA SCHULTE 81,957 DWT Bulk Carrier 37

[Contents](#)

[By Builder](#)

[By Ship Type](#)



**NORA SCHULTE** 81,957 DWT Bulk Carrier 37[Contents](#)[By Builder](#)[By Ship Type](#)

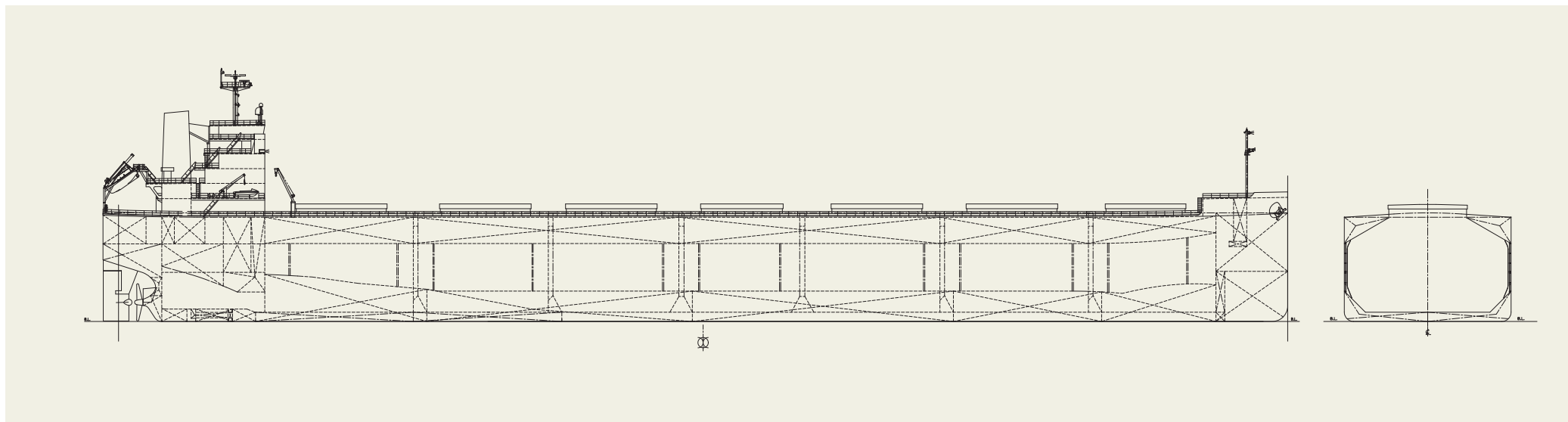
The 81,957 dwt bulk carrier NORA SCHULTE was built at SHIN KURUSHIMA SANOYAS SHIPBUILDING CO., LTD. and delivered to a Singaporean Owner in June 2023.

**Features**

1. The vessel has Seven (7) cargo holds.
2. The upper deck hatch covers are side rolling type and operated by hydraulic motors and chains.
3. The patented energy saving devices such as SANOYAS developed "STF" (Sanoyas-Tandem-Fin), ACE DUCT (Sanoyas Advanced flow Controlling and Energy saving DUCT) and advanced rudder bulb/fin construction are applied.

**PRINCIPAL PARTICULARS**

Length (o.a.).....	229.00 m	MCR (kw x min <sup>-1</sup> ).....	7,660 kW x 79.0 min <sup>-1</sup>
Breadth (mld.).....	32.24 m	NOR (kw x min <sup>-1</sup> ).....	6,450 kW x about 74.6 min <sup>-1</sup>
Depth (mld.).....	20.15 m	Speed (service).....	14.1 knots
Draft (mld.).....	14.57 m	Complement.....	25P
Gross tonnage.....	43,442	Classification.....	NK
Deadweight.....	81,957 MT	Loading capacity (grain).....	97,034m <sup>3</sup>
Main engine.....	DIESEL UNITED-WIN GD 6X52	Builder:.....	Shin Kurushima Sanoyas Shipbuilding Co., Ltd.



# Shin Kurushima Sanoyas Shipbuilding manufacture LNG Fuel Tank 81

[Contents](#)[By Builder](#)[By Ship Type](#)

Shin Kurushima Sanoyas Shipbuilding Gas Tank Division designs and manufactures various cargo and fuel gas tanks. Recently, we have been manufacturing LNG fuel tanks to be installed on Pure Car Carrier built at the Shin Kurushima Dockyard. This is first large LNG fuel tank using 9% nickel steel in Japan.

Our company has a wide range of experience and achievements that have been accumulated for many years in LPG cargo tanks manufacturing. Furthermore, we constructed a new insulating shop for insulation work, which is an important factor of cryogenic LNG tanks, and has an organizational structure in consideration of continuous manufactur-

ing. In addition to LNG fuel tanks, we are also conducting research and development on ammonia tanks and LCO<sub>2</sub> tanks, which are expected to be in demand as alternative fuels and transportation in the future. We design and manufacture a wide variety of marine gas tanks to meet the diverse needs of our customers.